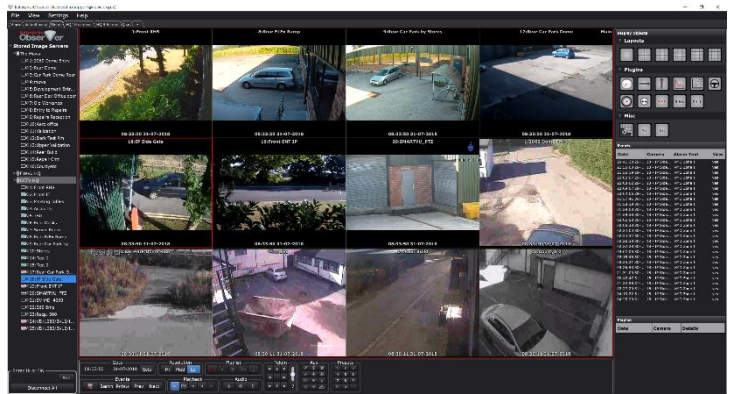




## Enterprise ObserVer

Enterprise ObserVer is NetVu's next generation video management and viewing software. Highly configurable and scalable with an intuitive user interface, it can be used as a simple viewer or a full building management and control system, making it a highly cost-effective solution.

Whether it's on a remote laptop or in a control room environment, Enterprise ObserVer provides all the video surveillance management tools expected, and a lot more, configurable to the individual user's requirements.



## Features & Benefits

- Single-site and multi-site control, allowing an Operator to simultaneously supervise and control video from one image server, or from several distributed sites.
- The monitoring station anywhere on the network. Therefore, removing the limitations of a conventional wired system (e.g. maximum distances).
- Includes the necessary control functions for monitoring a video surveillance system and controlling Pan-Tilt-Zoom (PTZ) cameras, establishing audio connections, camera switching etc.
- All events are logged in an SQL database, and video from each session is linked to the alarm log which provides a clear audit trail compliant with BS 8418:2015.
- Data from the SQL database can be processed using standard database tools to enable customised reports to be easily produced.
- Completely user definable worksheet layouts.
- Stored Connections in individual worksheet layouts.
- Multiple, simultaneous window layouts.
- Advanced Activity and Event Search.
- User Playlists.
- Camera Icons showing location of other cameras near to the current scene.
- Supports 360° cameras, with stored presets and multiple concurrent views from the same source.
- Definable plugins for displaying system data and control.
- Clickable Camera select maps.
- Dials and Bar Gauges.
- Graph components.
- Status pseudo-LED.
- Text Variable display.
- Script IDE Editor and display.
- GPS Maps.
- Multiple loadable PAR file sessions.
- Simultaneous playback from multiple units in single window or multiple windows.
- Export with Graphical Overlays.

In addition to providing multi-segmented displays, customised alarm integration, stored camera pre-sets, PTZ control and playlist evidence retrieval, Enterprise ObserVer also offers unique NetVu added value features. These include situational tracking with automatic switch to high resolution event recording, system diagnostics, adjacent camera on screen prompts with easy one touch switching, and exceptional High Definition quality, instant de-warping of 360° Fisheye camera display.

Enterprise ObserVer is both legacy and forwards compatible with many Dedicated Micros, FireVu and TransVu products and all new HD cameras, so it brings together hybrid, HD and full HD IP management and control.

Enterprise ObserVer also offers powerscript support which allows the user to further customise the functionality to their exacting needs. All this adds up to an extremely efficient and centralised video management system that delivers excellent return on investment.

## Ordering Information

| Part Number | Description  |
|-------------|--|
| ENVO/BAS/S  | Basic, single user.  |
| ENVO/BAS/M  | Basic, master site licence.                                |
| ENVO/STD/S  | Standard, single user.                                     |
| ENVO/STD/M  | Standard, master site licence.                             |
| ENVO/PRE/D  | Premium, fully featured, time expired, demonstration only. |
| ENVO/PRE/S  | Premium, single user.                                      |
| ENVO/PRE/M  | Premium, master site licence.                              |

## Technical Specification

| Minimum System Requirements |   |
|-----------------------------|---|
| Operating System            | Microsoft Windows 7 to Windows 10.                        |
| Processor                   | Intel i3 dual core.                                       |
| Memory                      | 4GB RAM.  |
| Graphics Capability         | OpenGL 2.0 compatible graphics card.                      |
| Recommended System          |   |
| Operating System            | Microsoft Windows 7 to Windows 10.                        |
| Processor                   | Intel i5 or i7 quad core.                                 |
| Memory                      | 4GB RAM.  |
| Graphics Capability         | integrated GPU or an OpenGL 2.0 compatible graphics card. |
| Warranty                    |   |
|                             | 1 year.   |

Document Version Number 1.0 © Copyright NetVu Limited Date 31/07/2018 E. & O.E.